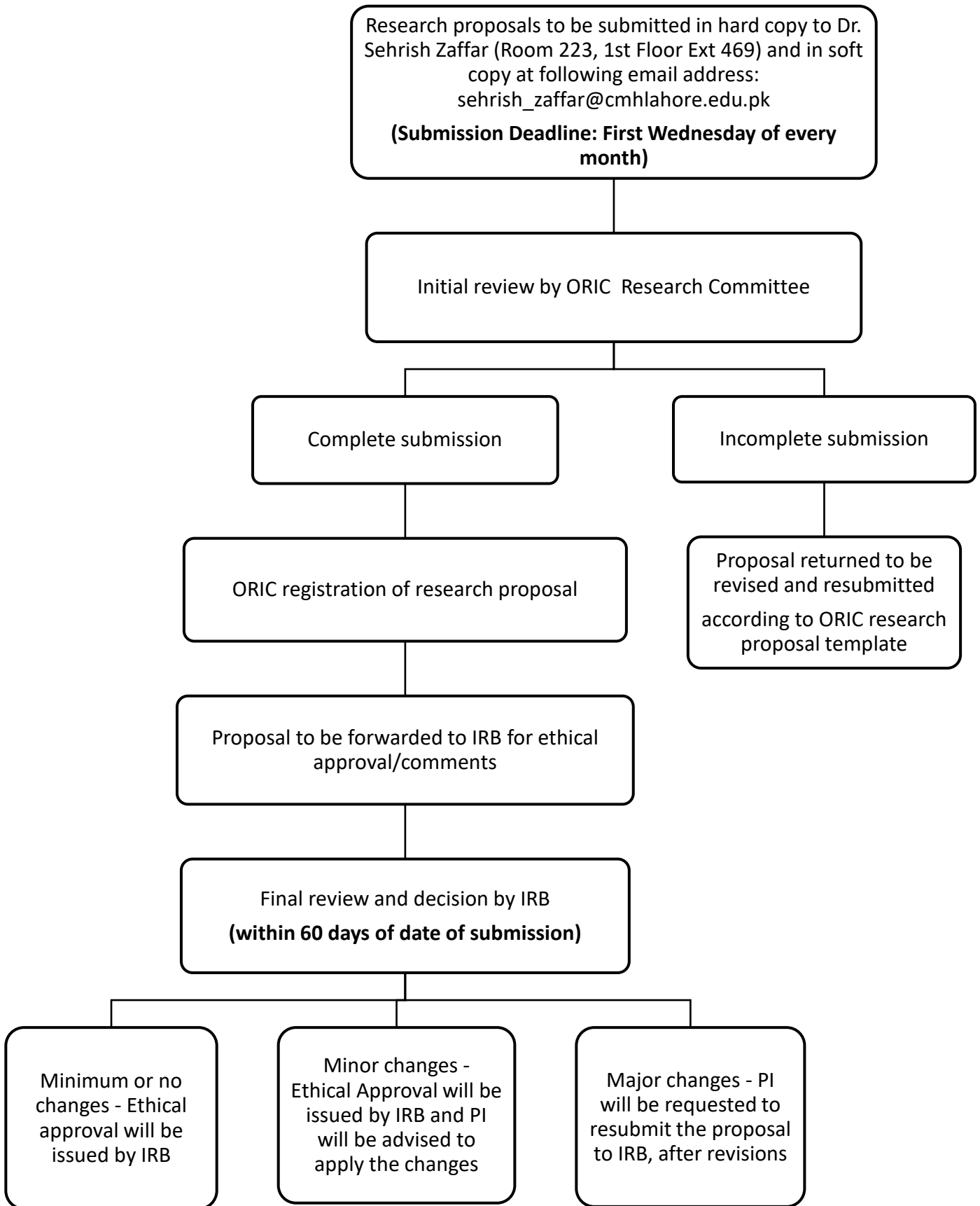


ORIC Research Proposals Flowchart



-Submission of both Hard & Soft copy of the proposal is MANDATORY with contacts (cell Phone number and email) of the Principal Investigator/Supervisor.

-Complete submission means that the research protocol is written according to the "Research Proposal Template" provided by ORIC **OR** according to the CPSP guidelines for FCPS students' research proposals.